

This equipment is used for testing the basic parameters of electrical safety in the end of lines of plant producing appliances, electronic equipment, lighting, high volume machine tools, etc.

Tests making by this equipment:

- Short Circuit.
- Grounding resistance.
- Dielectric Strength.
- Start the equipment under test.

Dielectric Strength Testing is done passively. I mean, not runs the equipment under test.

The system control and data acquisition is based on a generation microprocessor mounted on a plate owns selection, filtering, signal processing and measurement. This plate is linked with internal PC, which runs a software responsible for the administration and control of the entire system.

A keyboard and mouse allow total control Functions as well as its programming team. A visual and audible signal lets you monitor equipment performance as well as the warning of a nonconforming test.

The monitor system has 17" LED to view and control the entire system.

The equipment EBE 2 (Basic Test Equipment) is a system of acquisition, processing, control and management of data, to store all the results in a database and then generate production reports daily / monthly / annual statistical graphs, thus obtaining all the necessary information and trends for managing production control system.

It also allows to generate label printing (printer not provided) Product identificatory and results of tests. Both the team and the platform were designed for easy handling and dynamic..

The EBE 2 (Basic Test Equipment) meets the needs of traceability required tests and calibrations performed in any certification system.

This combination ensures proper handling of information to meet requirements which may require Electrical Product Certification or ISO 9001.

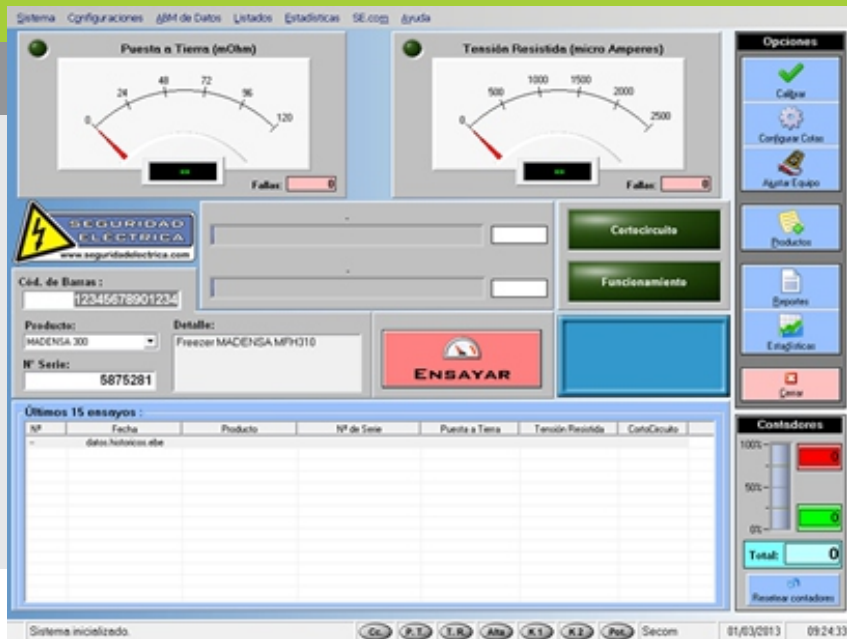


Technical Characteristics

- **Power Supply:** 220Vca, 50 Hz, 6 A, single-phase.
- To use on the table.
- Embedded PC
- Monitor 17" LED.
- Totally control by microcontroller..
- To Test equipment **Class I** of up to To 6A and 220Vca (more consumption to order).
- Verification Set (optional).
- **Dimensions.** 250 x 500 x 620 (h) mm. Aprox.
- **Weight.** 60 Kg approx.
- According to: **IEC 60335-1 Anexo A.**

Características del Sistema.

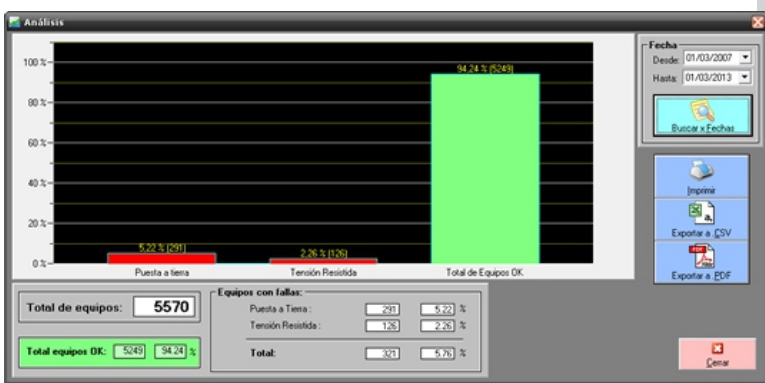
- Save the data from each test.
- It generates Listing of tests.
- It generates statistical Analyses with bar chart.
- Generate reports of:
 - Calibrations made.
 - Configurations made.
 - Tests made.
 - Adjustments made to the equipment.
 - Backups made or cancelled.
 - Statistical analyses.



Nº	Fecha	Producto	Nº de Serie	P. a Tierra	T. Resistida	R. de Aislación	Con. de fuga	Potencia	Con.	Tensión	Con. Fi.
48	03/11/2008 00:00:02	Ventilador de Pe 999999	11	22	33	44	459	2.1	200	1	
49	03/11/2008 00:00:02	Ventilador de Pe 999999	11	22	33	44	459	2.1	200	1	
42	03/11/2008 00:00:02	Ventilador de Pe 999999	11	22	33	44	459	2	200	1	
62	03/11/2008 00:00:02	Ventilador de Pe 999999	11	22	33	44	459	2	200	1	
71	03/11/2008 00:00:02	Ventilador de Pe 999999	11	22	33	44	459	2	201	1	
78	03/11/2008 00:00:02	Ventilador de Pe 999999	11	22	33	44	459	2	201	1	
68	03/11/2008 00:00:02	Ventilador de Pe 999999	11	22	33	44	460	2	200	1	
67	03/11/2008 00:00:02	Ventilador de Pe 999999	11	22	33	44	459	2.1	200	1	
66	03/11/2008 00:00:02	Ventilador de Pe 999999	11	22	33	44	459	2.1	200	1	
65	03/11/2008 00:00:02	Ventilador de Pe 999999	11	22	33	44	459	2	200	1	
58	03/11/2008 00:00:02	Ventilador de Pe 999999	11	22	33	44	459	2	200	1	
63	03/11/2008 00:00:02	Ventilador de Pe 999999	11	22	33	44	459	2.1	200	1	
62	03/11/2008 00:00:02	Ventilador de Pe 999999	11	22	33	44	460	2	200	1	
61	03/11/2008 00:00:02	Ventilador de Pe 999999	11	22	33	44	459	2.1	200	0.97	
60	03/11/2008 00:00:02	Ventilador de Pe 999999	11	22	33	44	459	2.1	200	1	
59	03/11/2008 00:00:02	Ventilador de Pe 999999	11	22	33	44	459	2	200	1	
64	03/11/2008 00:00:02	Ventilador de Pe 999999	11	22	33	44	459	2.1	200	1	
57	03/11/2008 00:00:02	Ventilador de Pe 999999	11	22	33	44	459	2.1	200	1	
25	03/11/2008 10:02:02	Ventilador de Pe 999999	21	720	33	44	459	2.1	200	0.98	
24	03/11/2008 10:02:02	Ventilador de Pe 999999	25	720	33	44	459	2.1	200	0.98	
23	03/11/2008 10:02:02	Ventilador de Pe 999999	1.35	3500	3	712	459	2	200	0.98	
22	03/11/2008 10:02:02	Ventilador de Pe 999999	25	720	33	44	459	2.1	200	0.97	
21	03/11/2008 10:02:02	Ventilador de Pe 999999	57	720	33	44	459	2.1	200	0.98	
20	03/11/2008 10:02:02	Ventilador de Pe 999999	56	720	33	44	459	2	200	0.98	
16	03/11/2008 10:02:02	Ventilador de Pe 999999	100	720	3	652	459	2.1	219	0.98	
18	03/11/2008 10:02:02	Ventilador de Pe 999999	56	720	33	44	459	2.1	200	0.97	
17	03/11/2008 10:02:02	Ventilador de Pe 999999	55	720	33	44	459	2	219	0.98	
26	03/11/2008 10:02:02	Ventilador de Pe 999999	23	720	33	44	459	2	200	0.98	
36	03/11/2008 10:02:02	Ventilador de Pe 999999	11	720	33	44	459	2.1	219	0.97	
19	03/11/2008 10:02:02	Ventilador de Pe 999999	55	720	33	44	460	2.1	200	0.99	
27	03/11/2008 10:02:02	Ventilador de Pe 999999	25	720	33	44	459	2.1	200	0.98	
38	03/11/2008 10:02:02	Ventilador de Pe 999999	34	720	33	44	460	2.1	200	0.98	
29	03/11/2008 10:02:02	Ventilador de Pe 999999	23	720	33	44	459	2	200	0.99	
30	03/11/2008 10:02:02	Ventilador de Pe 999999	65	720	33	44	459	2.1	200	0.98	

- It allows To calibrate the equipment in plant.
- It allows To fit the equipment in plant.
- It makes backup daily of the data.
- It allows to take the Trazabilidad of all the made Calibrations .
- It allows to take the Trazabilidad of all made Ajustes .
- Impression of labels (Optional).
- Thermal printer of labels (Optional).
- Impression of reports.
- Configurations:
 - Setting of Time of each test.
 - Setting of Minimum and Maximum limits of each test.
 - Setting of Test to make.
- Make This Test:
 - Short Circuit.
 - Ground Tests.
 - Dielectric Strenght.
 - Starting of the equipment..

- All the reports can Be exported to archives .PDF (to send them by mail).
- All the reports can Be exported to archives .CSV (to work them in any list of calculations).
- On-line Counters :
 - Equipment Tested.
 - Equipment with Faults.
 - Equipment OK.
 - Faults by tests.



- Reader of bar code (Optional).
- Only authorized personnel can have access to the adjustment of the equipment, through user and password.
- OS: Windows 7 Home Premium.