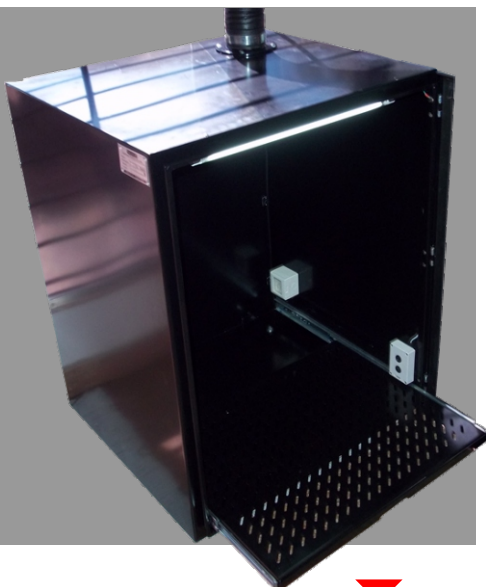


## Technical characteristics

- Dimensions: 800mm x 700mm x 1000mm (h).
- Material: Sheet iron
- Finishing: Black painted.
- Fan 4" para extracción de humo.
- Door with:
  - Glass.
  - 2 Openings to operate the equipment.
- Volume: >0.5 m<sup>3</sup>
- Internal light.
- Removable tray with sliding.



Detail removable tray